



# ROYAL

FLUSHOMETER

- 5p.s.i Low Water Pressure
- Highly Vandal Resistant
- Guaranteed Performance



Model 152-S / Model 150-MPS



## Description

6.0Lpf water saving concealed water closet flushometer, 1½" I.P.S. inlet for sitting WC or squatting pan

## Flush Cycle

6.0Lpf (+- 0.5Lpf)

## Specification

Quiet, concealed, diaphragm type, rough brass closet flushometer for either left or right hand supply with the following features:

- PERMEX™ synthetic rubber diaphragm with dual filtered fixed bypass
- Metal direct acting, water conservation non-hold open push button with triple seal handle packing
- Adjustable tailpiece for easy alignment of flushvalve & bowl / pan
- 1½" I.P.S. individual control valve
- Exposed parts chrome plated
- High copper, low zinc brass casting for dezincification resistance
- Non-hold open push button, fixed metering bypass and no external volume adjustment to ensure greater water conservation
- Diaphragm & handle packing to be molded from PERMEX™ rubber compound for chloramine resistance

## Accessories with Royal 152-S & Royal 152-S-BX:

- 1½" control valve
- (700 \* 300)mm flushpipe (for sitting WC) or
- (1000 \* 500)mm flushpipe (for squat pan)
- Inwall metal box with s/s panel (for 152-S-BX only)

Valve body, cover & tailpiece shall be in conformance with ASTM Alloy Classification for Semi-Red Brass. Valve shall be in compliance to the applicable sections of ASSE 1037, ANSI/ASME 112.19.6 and Military Specification V-29193

## L-Dimension

Standard L-Dimension (from the finished wall to the outlet of the valve) shall be 10¾"

Contact our distributor for other L-Dimensions

## Also available with

- Oscillating palm push button
- ADA lever handle

## Appointed Distributor:

**AGROW CORPORATION SDN BHD** (567036-T)

**Head Office** : 2C-4, Level 3, Wisma King Koil, Jalan SS 6/6, Kelana Jaya, 47301 Petaling Jaya, Selangor Darul Ehsan, Malaysia.  
Tel: 03-7805 4748 (Hunting Line) Fax: 03-7805 4723 E-mail: akron@tm.net.my

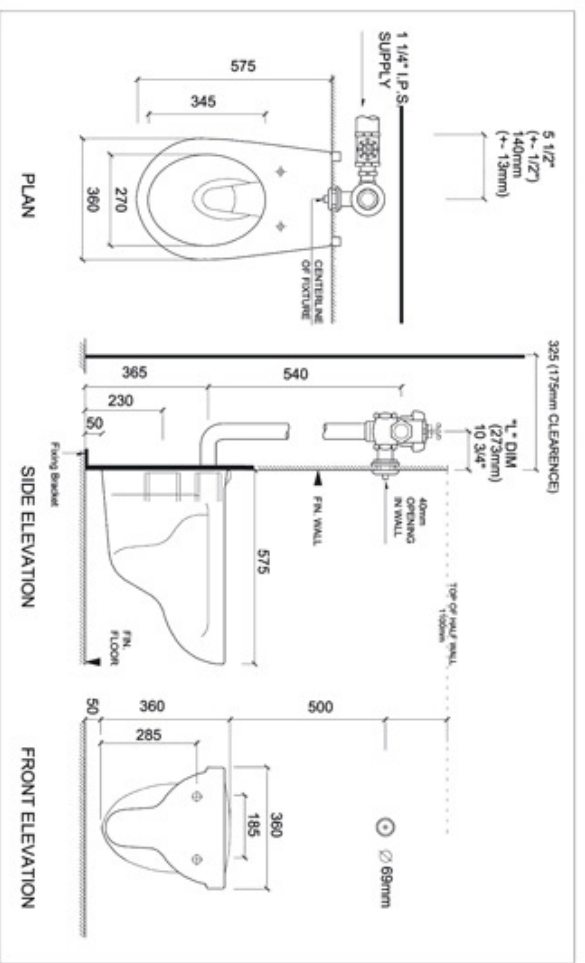
**Penang Branch** : 181, Jalan Macalister, 10400 Georgetown, Pulau Pinang, Malaysia.  
Tel: 04-229 7461 / 229 7063 Fax: 04-229 7462

**Johor Bahru Branch** : 70, Jalan Molek 2/1, Taman Molek, 81100 Johor Bahru, Johor, Malaysia.  
Tel: 07-353 2261 / 353 2267 Fax: 07-353 2254

**SLOAN**®  
Country of Origin: U.S.A.

SLOAN VALVE COMPANY • 10500 SEYMOUR AVE. • FRANKLIN PARK, IL. 60131  
<http://www.sloanvalve.com>

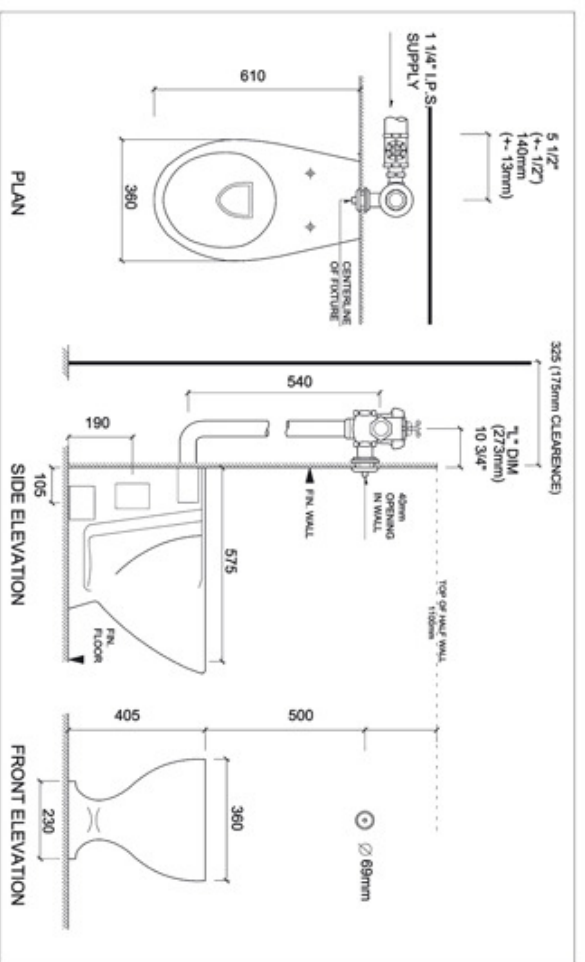
SLOAN ROYAL 152-S FLUSHVALVE with JOHNSON SUISSE MONACO WALL HANG WC



All dimension in "mm"

Not to scale

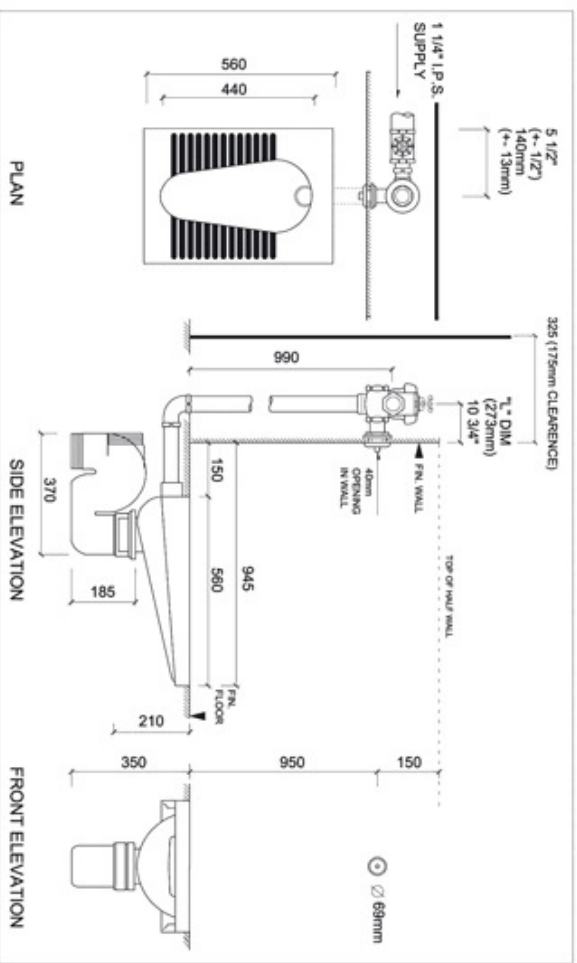
SLOAN ROYAL 152-S FLUSHVALVE with JOHNSON SUISSE SHEFFIELD BACK-TO-WALL PEDESTAL WC



All dimension in "mm"

Not to scale

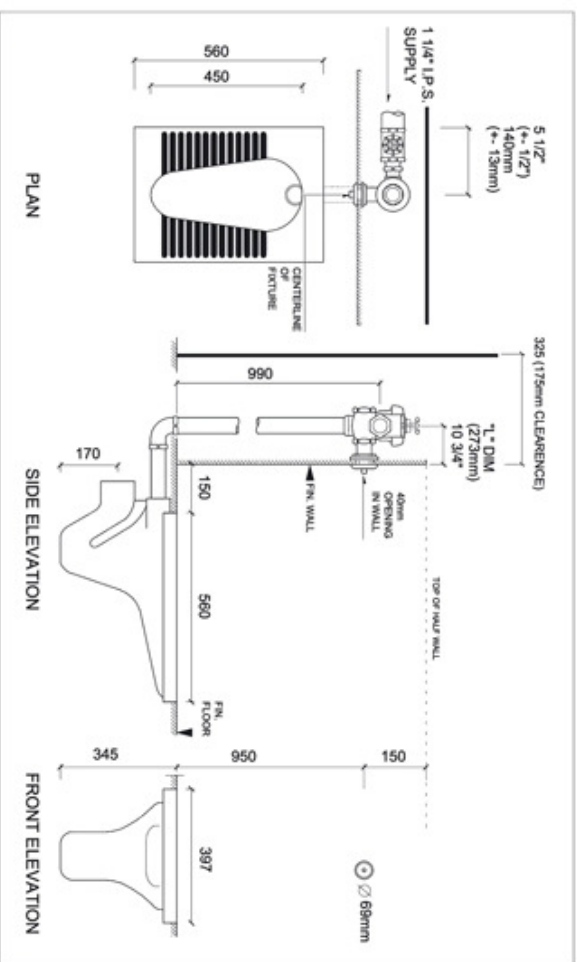
SLOAN ROYAL 152-S FLUSHVALVE with JOHNSON SUISSE ANDERMATT SQUAT PAN



All dimension in "mm"

Not to scale

SLOAN ROYAL 152-S FLUSHVALVE with JOHNSON SUISSE ANGLIA SQUAT PAN



All dimension in "mm"

Not to scale